

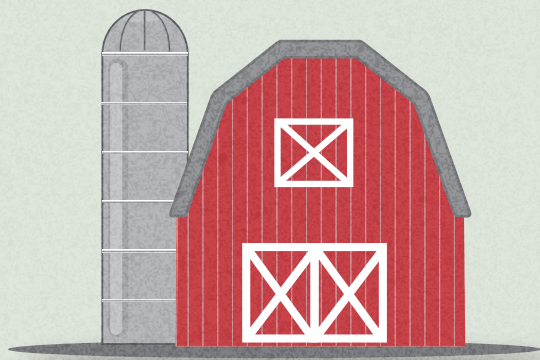
Thurston Region

FARMLAND

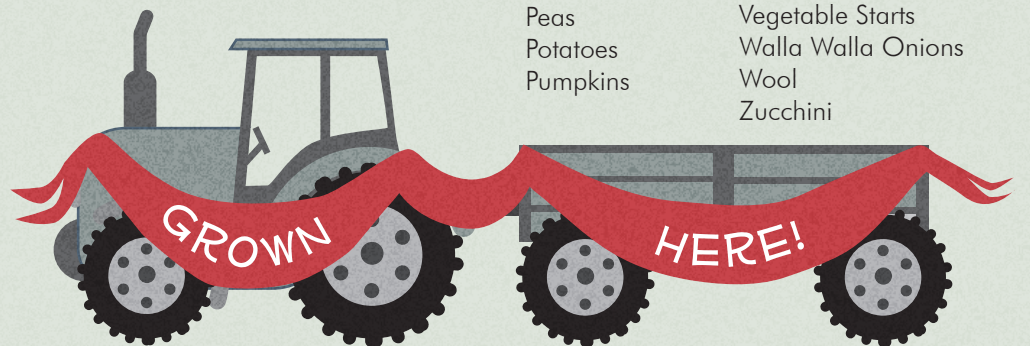
Snapshot

1,336

Number of Farms
in Thurston County



Alfalfa	Chickens	Hay	Radishes
Alpacas	Christmas Trees	Hogs	Raspberries
Arugula	Cilantro	Honey	Romaine
Basil	Corn	Jalapeno Pepper	Rosemary
Beans	Cucumbers	Joi Choi	Scallions
Beef	Daikon	Kale	Shallots
Beets	Dill	Kohlrabbi	Shellfish
Bell Peppers	Eggplant	Leeks	Snap Peas
Blueberries	Eggs	Lettuce	Snow Peas
Broccoli	Escarole	Llamas	Spinach
Cabbage	Fava Beans	Marionberries	Squash
Carrots	Fennel	Milk	Strawberries
Cauliflower	Garlic	Mushrooms	Summer Squash
Celery	Goats	Napa Cabbage	Tomatoes
Chard	Green Beans	Onions	Turkeys
	Green Onions	Parsley	Turnips
		Peas	Vegetable Starts
		Potatoes	Walla Walla Onions
		Pumpkins	Wool
			Zucchini

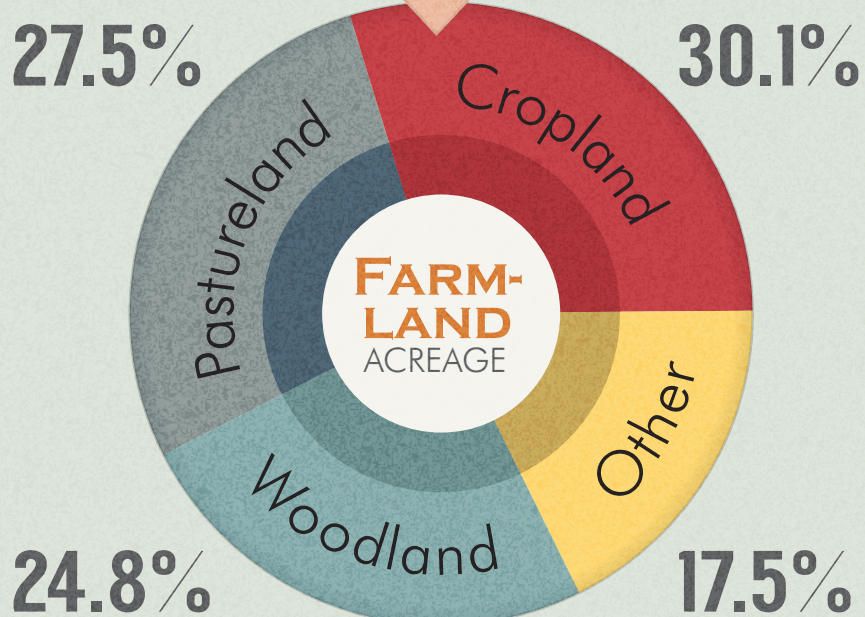


76,638
ACRES

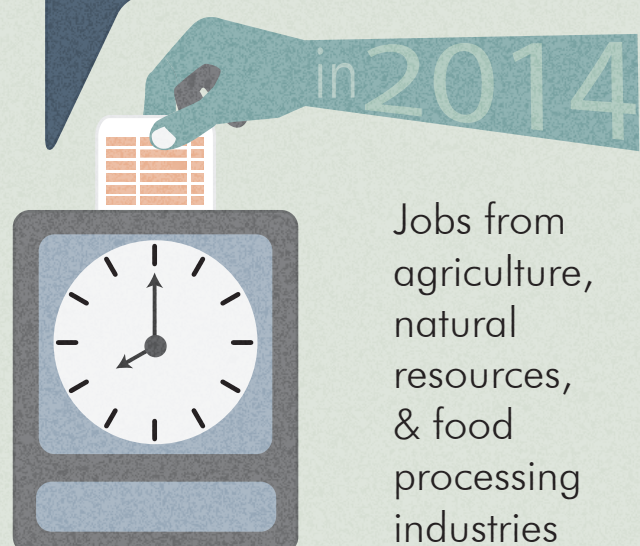
\$485
Million
in sales



Sales from
agriculture,
natural
resources,
& food
processing
industries



3,362 Jobs



Jobs from
agriculture,
natural
resources,
& food
processing
industries

So what's the problem?

6,500

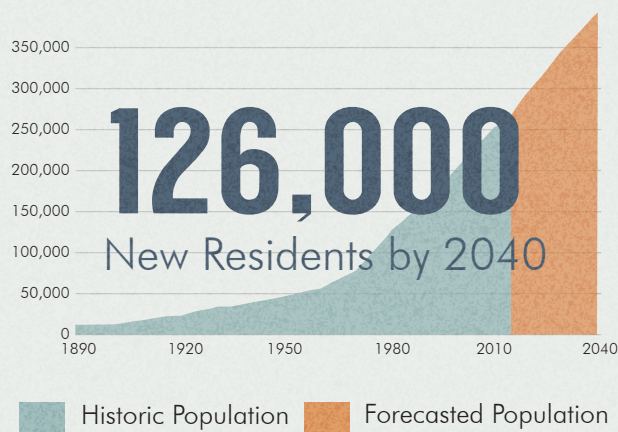
Acres

Number of farmland acres in Thurston County lost to development since 2000

22,600

of Thurston County's farmland is at risk of being lost to development

Thurston County Population is growing



These new residents will need a place to live and food to eat. Where they locate could impact farmland.

Average Age of Farmer



70%

of farmland is expected to change ownership in the next 20 years

\$8,700 per acre

Avg. assessed value of undeveloped land in rural Thurston County

\$1,660 per acre

Gross income from farm-related sources (before operational costs and mortgage)

\$203 per acre

Net income from farm-related sources (after operational costs and mortgage)

But there's good news too!

over
2,300
ACRES
preserved!

Conservation efforts in Thurston County have preserved 2,300 acres of farmland. We need new funding, tools, and strategies to help us reach Zero Net Loss.

To learn more visit
www.trpc.org/farms

SOURCES

USDA Census of Agriculture, TRPC Population and Employment Forecast, Washington State Department of Agriculture
For a complete list of sources, visit trpc.org/farms